

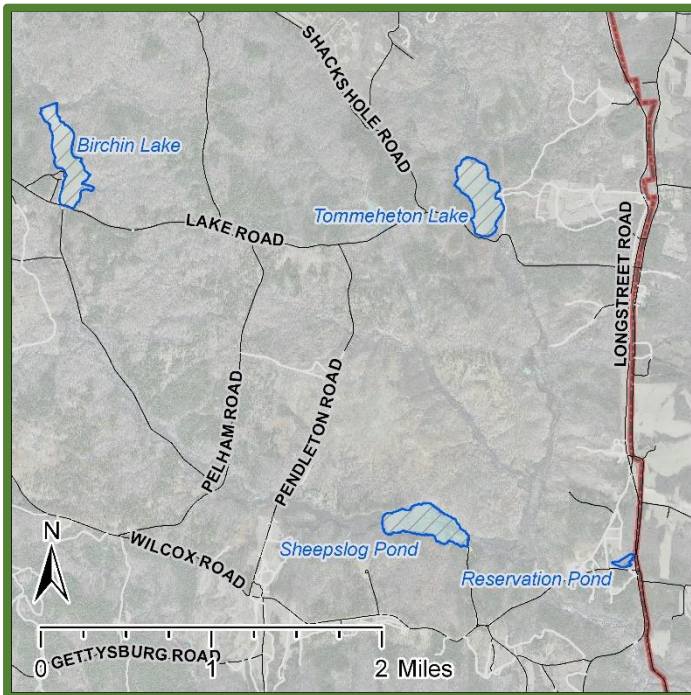
Fort Barfoot Natural Resources

Tommeheton Lake

Latitude: 37.03712386 Longitude: -77.86041443

Tommeheton Lake is a 51-acre impoundment located in area 23 East in the Controlled Access Area (CAA) of Ft. Barfoot. Because this lake is in the CAA, it is only accessible when the Lake Rd. barrier (LB2) is open for vehicular traffic. General public anglers can see when this lake is open by visiting the Ft. Barfoot iSportsman system.

This impoundment supports a multi-species fishery, with potential for solid catch rates of sunfish, largemouth bass, black crappie, and chain pickerel. Efforts have been made to increase the average size of largemouth bass, so potential trophy largemouth bass can be found here. The current daily creel limit is 1 fish per day with a 22in. minimum length for largemouth bass. The average water depth is 4ft. with the deepest potential reaching 6-6.5ft. Tommeheton Lake provides limited bank fishing access and is best enjoyed with a personal watercraft.



ADDRESS

Fort Barfoot Game Check Station
Dearing Ave
Blackstone, VA
23824

PHONE

Ft Barfoot Game Check Station:
434-292-2618
Ft. Barfoot Natural Resources Office:
434-292-2292

WEBSITE

<https://barfoot.isportsman.net>