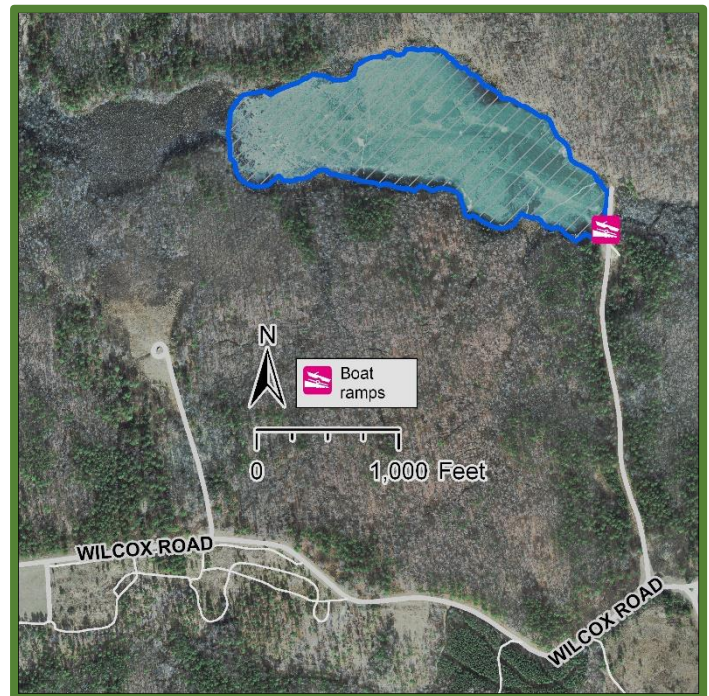
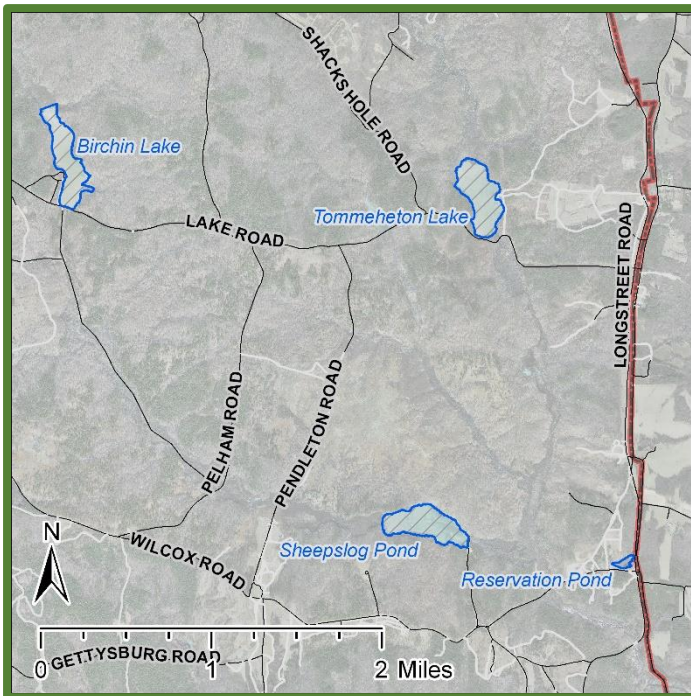


# Fort Barfoot Natural Resources

## Sheepslog Pond

Latitude: 37.00748338 Longitude: -77.86228432

Sheepslog Lake is a 46-acre impoundment located in area 32 in the Controlled Access Area (CAA) of Ft. Barfoot. Sheepslog Lake can only be accessed by Controlled Access Area Vested anglers when the lake is marked as being open in the Ft. Barfoot iSportsman system. This impoundment supports a multi-species fishery, with potential solid catch rates for sunfish, black crappie, chain pickerel, the occasional bowfin, and the possibility of trophy largemouth bass. The average water depth is 5.5ft. with the deepest potential reaching 9ft. in select spots. Sheepslog Lake provides limited bank fishing access and is best enjoyed with a personal watercraft.



### ADDRESS

Fort Barfoot Game Check Station  
Dearing Ave  
Blackstone, VA  
23824

### PHONE

Ft Barfoot Game Check Station:  
434-292-2618  
Ft. Barfoot Natural Resources Office:  
434-292-2292

### WEBSITE

<https://barfoot.isportsman.net>